

# Palm Beach Park of Commerce

Jupiter, Florida



AVAILABLE

±5 to ±100 contiguous acres

PRATT WHITNEY ROAD

niagara  
EST. 1963  
BOTTLING, LLC

MCLANE

S & K  
Realty Group

Rail Service to Port of Palm Beach

BEE LINE HIGHWAY



**NEW OWNERSHIP.  
NEW NAME.  
NEW OPPORTUNITY.**



# Palm Beach Park of Commerce

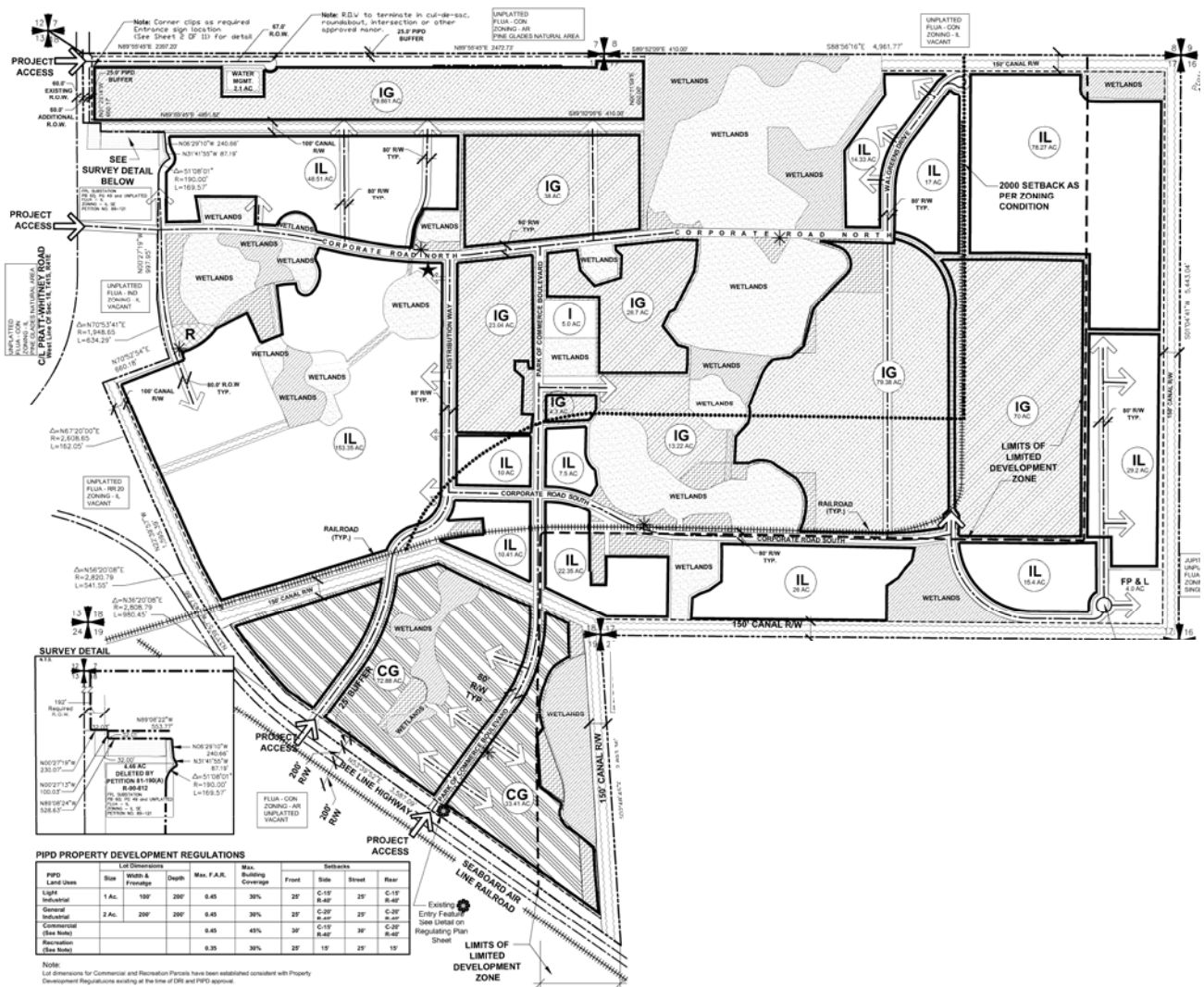
Jupiter, Florida

At Palm Beach Park of Commerce, you'll enjoy easy access to the region's extensive transportation network, including major highways and airports. Palm Beach Park of Commerce is also one of the few premier business locations that offers rail service, foreign trade zones, heavy industrial options, plus a direct link to the Port of Palm Beach.

## PROPERTY FEATURES

PREMISES	383 Available Acres of Commercial and Industrial Land for Sale
LEASE RATE	\$5.50 NNN
SALE RATE	\$6.00 to \$8.00 PSF for Industrial \$9.00 PSF for Commercial

## Master Plan







## Property Features

- Total Park Acreage: 945 AC
- 383 Acres of Commercial and Industrial Land Available for Sale
- Sites Available from 5-100 Acres
- Fully Entitled / Fully-Served Business Park
- Rail Access Directly to Port of Palm Beach
- 160,000 SF Warehouse Designed and Pad Ready
- Foreign Trade Zone
- Home to Over 50 Businesses - Including Walgreens, CSX, Niagara and McLane.
- Infrastructure and Utilities In Place



Centrally located in the heart of prestigious Palm Beach County, in one of the nation's strongest growth regions, **Palm Beach Park of Commerce** offers everything you could want from a premier Master-Planned Business Park.

Enjoy easy access to the region's extensive transportation network, including major highways, air and seaports, plus direct rail service with a link to the Port of Palm Beach.

For more information, please contact:

**Christopher Thomson, SIOR**  
Executive Director  
561 227 2019  
christopher.thomson@cushwake.com

**Cushman & Wakefield of Florida, Inc.**  
303 Banyan Boulevard, Suite 301  
West Palm Beach, FL 33401  
561 227 2020